

~ The Green Mountain Stopping House ~

In the early 1900's Hedley, because of the Nickel Plate Mine, was the boom town of the Similkameen. The mine was just coming into production and needed supplies. These supplies, with the exception of lumber, came down the lake via sternwheeler, and through Penticton.

L.A. Clark had been commissioned to build a route from Penticton to the Nickel Plate Mine. The road was completed in 1901, and the hauling of freight began. Having completed his task of surveying the road, Clark apparently decided to provide food and lodging for the freighters and travellers who would be using this route. The land which he pre-empted in 1900, chosen for the stopping house and barn, was about a kilometre from what is now the Apex turn off on Green Mountain Road. The original building, which was made out of squared timber, was incorporated into a larger stopping house built later.

The stopping house was an ideal location for both freighters and the stage line operators. The freighters made this an overnight stop on the way to the Nickel Plate Mine. They could obtain food and lodging here and feed for their horses.

The Welby Stage Line made this their noon stop, arriving at 1p.m. after leaving Penticton early in the morning. The Welby Stage changed teams here, then left to make Keremeos Centre by nightfall. The rotting log corrals can be seen in the woods, across from the open field, where the change teams for the stage were run in, caught, and harnessed as a fresh team for the remainder of the trip.

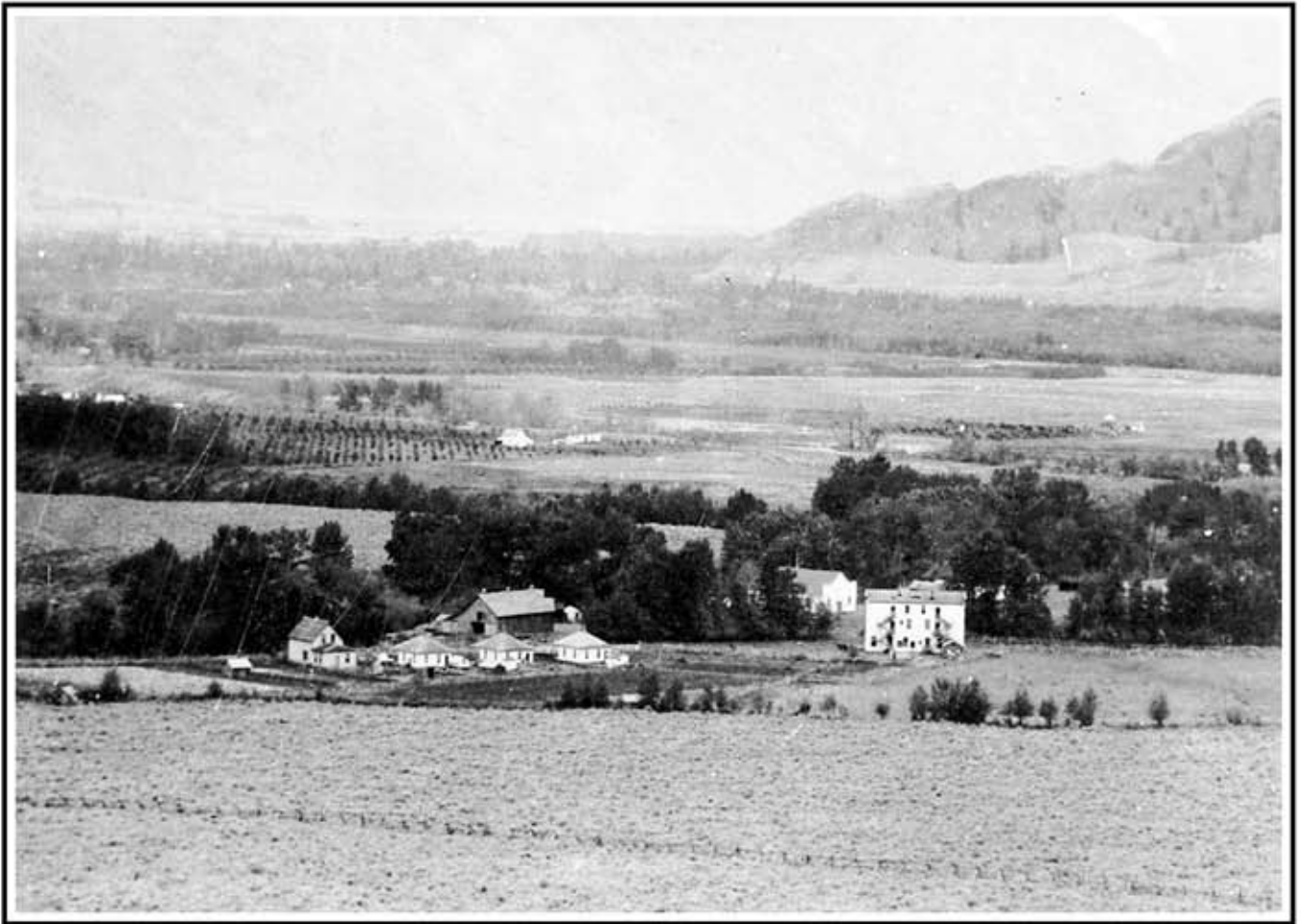
In 1903 the roadhouse also became the Green Mountain Post Office. Local ranchers and settlers used the building as a gathering place to collect mail and exchange gossip. The name came from Mr. L.A. Clark, he felt that the low, tree covered hills reminded him of his boyhood home in Vermont, consequently the name, Green Mountain.



The Green Mountain Stopping House was a stop for the Welby Stage Coach operating out of Penticton. Before the covered coach from Stockton California arrived, Welby used a three seated democrat to transport passengers. The stage horses were considered to be Cleveland Bays.



The stage often changed horses at the noon stop at Green Mountain. These are the remains of the log corrals, derelict and rotting beside the road, which were used to catch the teams as they were run in from the pasture in preparation for the arrival of the stage.



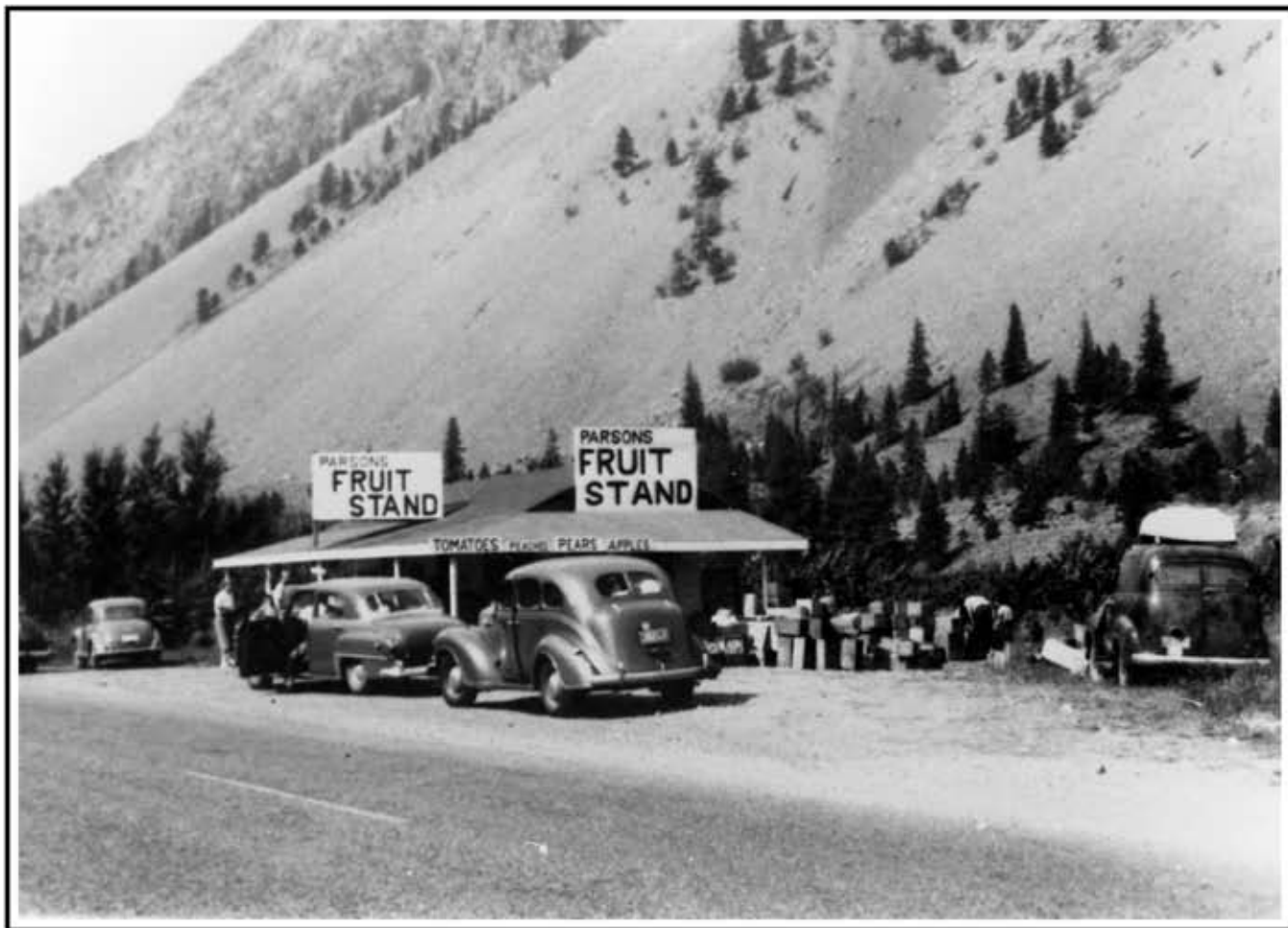
~ Keremeos Central ~

Keremeos Central, before the coming of the railroad in 1907, was located at the present junction of Highway 3A and the Keremeos Cutoff.

The settlement boasted the Central Hotel, Bromley's Blacksmith Shop across from the hotel, Richter Hall, the Tweddle's Livery Stable, Inglewood Supply Store, F.X. Richter's Inglewood Ranch, and a few homes.

The coming of the railroad in 1907 greatly affected the settlement. The Kirbys relocated and built the Keremeos Hotel, now the Keremeos Motor Inn at Keremeos. Tweddle established a shuttle service from the railroad station to the Central Hotel, first by team and democrat, and later with an auto stage using a 1912 Cadillac. Prohibition in 1917 caused the demise of the Central Hotel, and many others in Canada.

Two of the original Keremeos Central houses are still in use today. The once bustling activity of a thriving commercial center is back today, this time with fruit and vegetable stands marketing the produce of the fertile Similkameen Valley. Drop into Bear Frasch's Fruit Stand and view the selection of photos depicting Central Keremeos as it once was.



~ Keremeos ~

Keep left and take a leisurely trip through Keremeos, "the fruit stand capital of British Columbia".

The Keremeos we know today is the third location of Keremeos. The present location of the town came about when the Great Northern Railroad constructed a spur line to Keremeos, then on to the gold concentrator at Hedley, and then on to Princeton. At Princeton the Great Northern shared a line with the Kettle Valley Railroad to Otter Lake at Tulameen, where ice was cut, loaded in box cars, and taken back to the U.S.A. to provide refrigeration for the packing houses and early refrigerated rail cars.

Keremeos is an old town with many of the inhabitants the descendants of the early pioneers who developed the rich Similkameen Valley into the productive agricultural land it is today.

After your tour of Keremeos there are several options available for your return to the Okanagan Valley. The most direct route is via Highway 3A, but rather than follow the Green Mountain route, follow the main road to Highway 97, turn left at the junction and Penticton will soon come into view. I hope your tour has been enjoyable and rewarding.